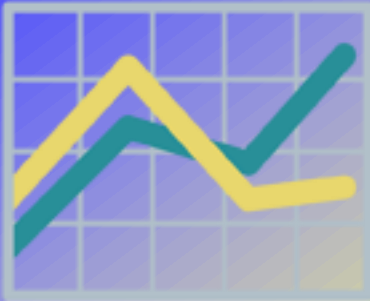


Quillayute Valley School District

Home of the Spartans, Warriors,
Puddle Jumpers and ISWa



AYP Presentation
October 13, 2009



Adequate Yearly Progress

What is Adequate Yearly Progress (AYP)?
Under the Federal No Child Left Behind Act, all states must test students every year to make sure they are learning key reading and mathematics skills.

Adequate Yearly Progress

The term Adequate Yearly Progress (AYP) comes from the federal requirement that all schools will have a certain and growing percentage of their students “meeting proficiency” on the state exam each year, so that by 2014, 100 percent of students in all schools nationwide will be proficient in reading and mathematics.



How is AYP calculated?

AYP is calculated separately for reading and mathematics. There are three major components that go into each calculations.

- WASL performance of various sub-groups
- Testing of at least 95% of their enrolled students at the time of testing.
- Elementary and middle school are evaluated unexcused absent rate.
- High school is evaluated graduation rate.



WASL – Performance by Subgroups

- All Students
- American Indian
- Asian
- Black
- Hispanic
- White
- Limited English
- Special Education
- Low Income



How do schools and districts make AYP?

1. By having all students and each subgroup meet or exceed all of AYP targets
2. Through the AYP “safe harbor” provision (if a school or district reduces its percentage of non-proficient students over the previous year by 10 percent)

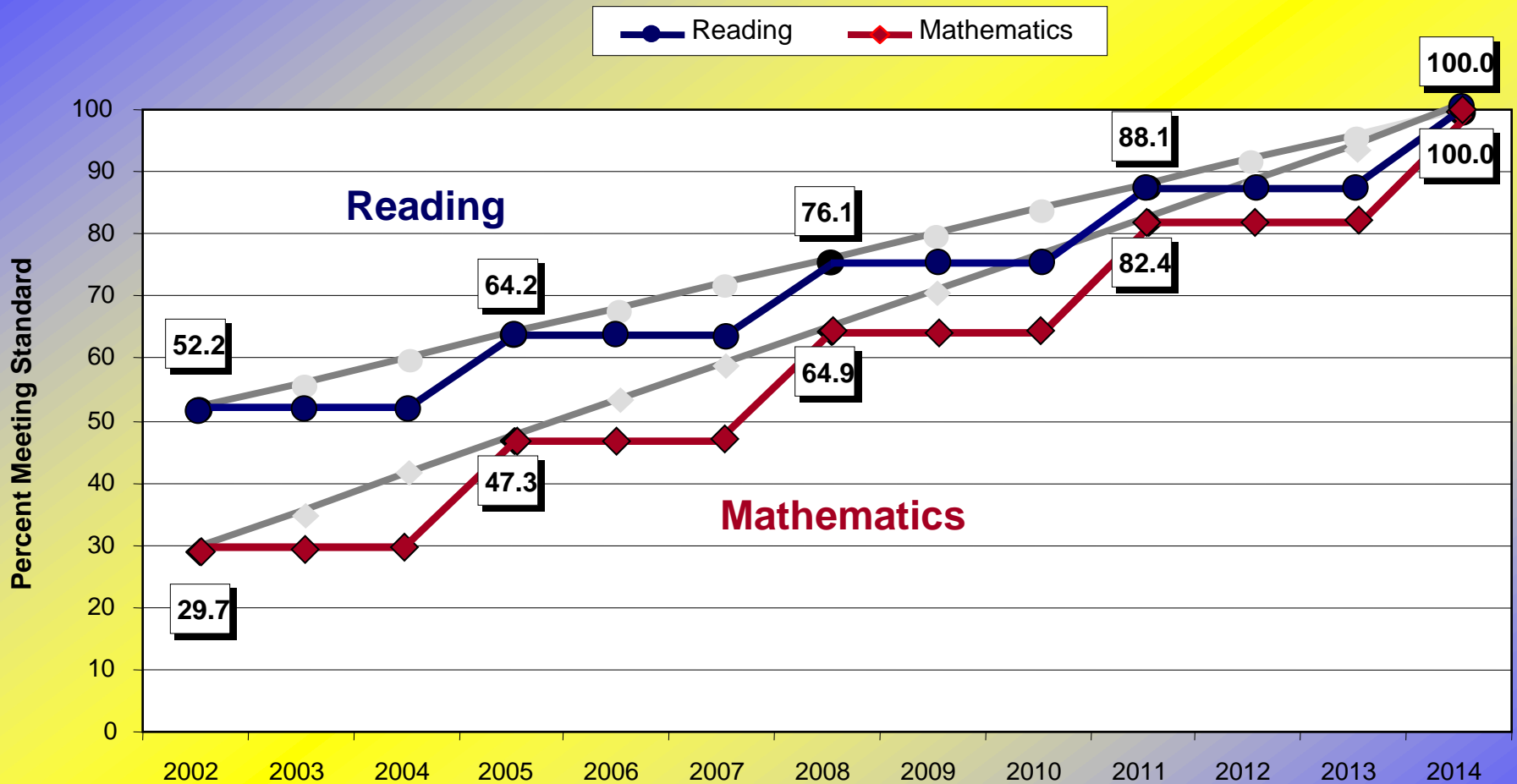


AYP Grade Level Calculations

Washington factors in Grades 3, 4 and 5 at the elementary level, Grades 6, 7 and 8 at the middle school level and Grade 10 at the high school level.



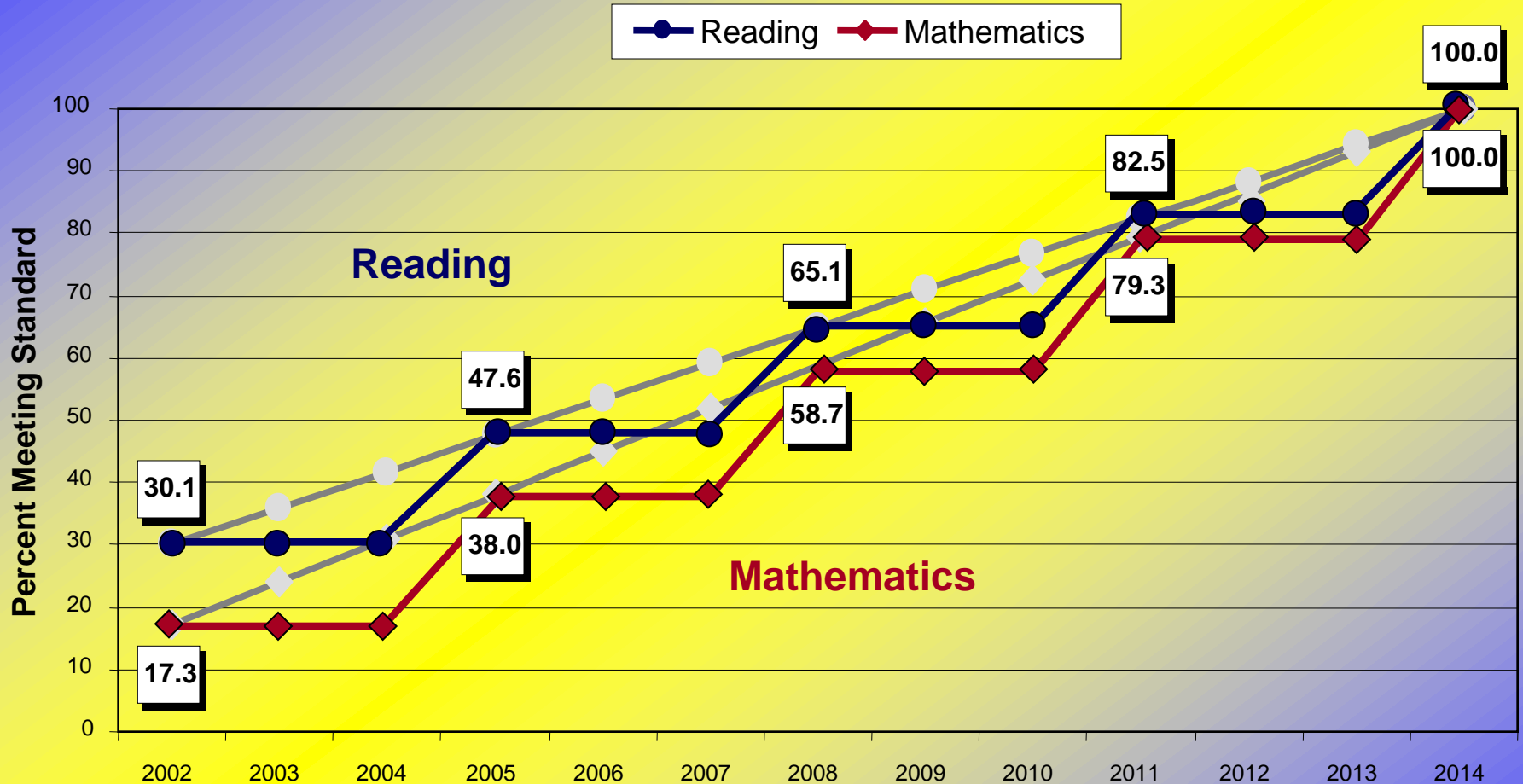
GRADE 4 YEARLY TARGETS



(Increments are rounded)

AYP can be made if the percent meeting standard is below the yearly target either via safe harbor or when the standard error is included in the total.

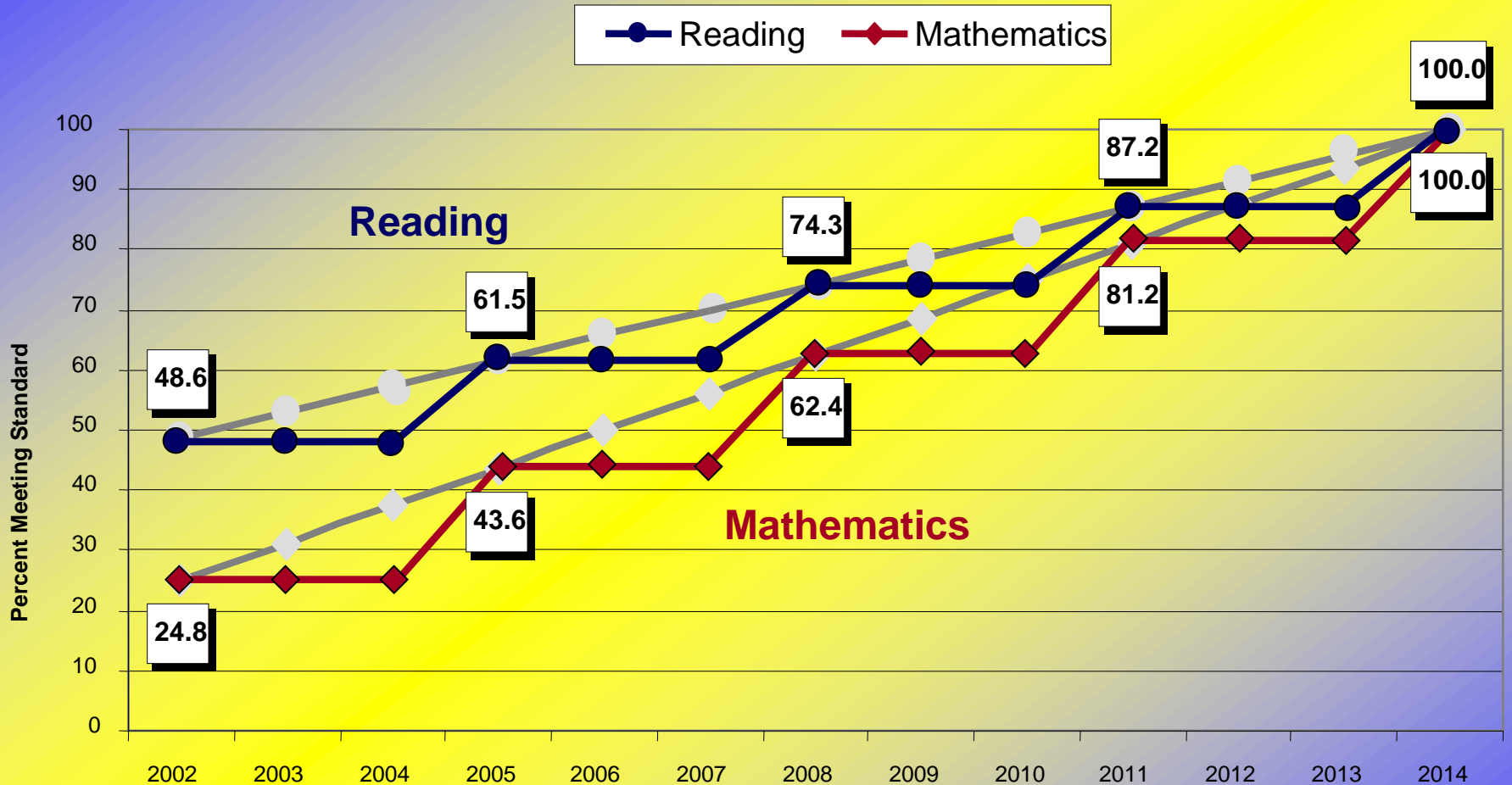
GRADE 7 YEARLY TARGETS



(Increments are rounded)

AYP can be made if the percent meeting standard is below the yearly target either via safe harbor or when the standard error is included in the total.

GRADE 10 YEARLY TARGETS



(Increments are rounded)

AYP can be made if the percent meeting standard is below the yearly target either via safe harbor or when the standard error is included in the total.

Quillayute Valley School District's Rating

| | |
|-------------------------|-------------|
| District – Overall | No – Step 1 |
| Forks Elementary School | No – Step 2 |
| Forks Middle School | No – Step 1 |
| Forks High School | No – Step 1 |
| Home School Plus | Yes |
| Alternative School | Yes |
| ISWa | No – Step 1 |
| Quileute Tribal School | Yes |



Adequate Yearly Progress

Step One (Year 2) – Schools in Step 1 must create a school improvement plan and provide parents the opportunity to move

their child/children into a school that has made AYP within the district. This is also referred to as Public School Choice.

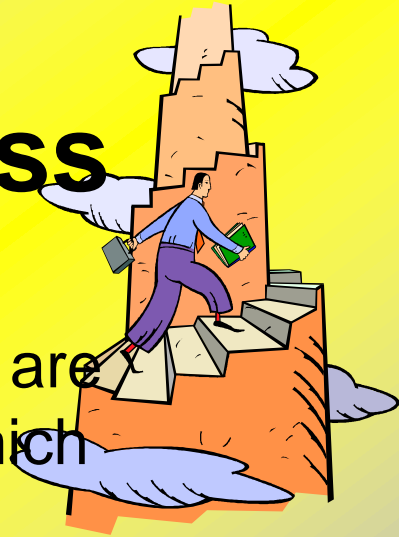
Step Two (Year 3) – Schools in Step 2 must continue to adjust their school improvement plan, provide Public School Choice and Supplemental Educational Services (SES) to low achieving student who are low income.



Adequate Yearly Progress

- Step Three (Year 4) – For schools in Step Three (Corrective Action), schools must select at least one of the following options (and identify their own actions), as well as continue School Choice, Supplemental Educational Services, and revise the school improvement plan:
 1. Make curriculum and instruction changes to improve student learning.
 2. Appoint outside experts to work to advise the school on revising and implementing the school plan.
 3. Extend the school year or school day.

Adequate Yearly Progress



- Step Four (Year 5) - In this step, school districts are required to undertake —school restructuring, which means a major reorganization of the school’s governance. The district has one year to prepare a restructuring plan. Parents and teachers must be provided information that the school has entered Step 4 and provided the opportunity to comment on the proposed restructuring actions and assist in the development of the restructuring plan. The plan must be implemented. The plan must be instituted no later than the beginning of the following school year, whether or not the school has moved into Step 5.

Adequate Yearly Progress

- Step Five (Year 6): The district must ensure that the school in Step Five has implemented the school's restructuring plan.

