

Quillayute Valley School District

2009 Washington Assessment of
Student Learning (WASL)
Test Scores

Presented to the QVSD Board of Directors
October 27, 2009

WASL Performance Levels

Proficient

4 *Above Standard*
Advanced Performance

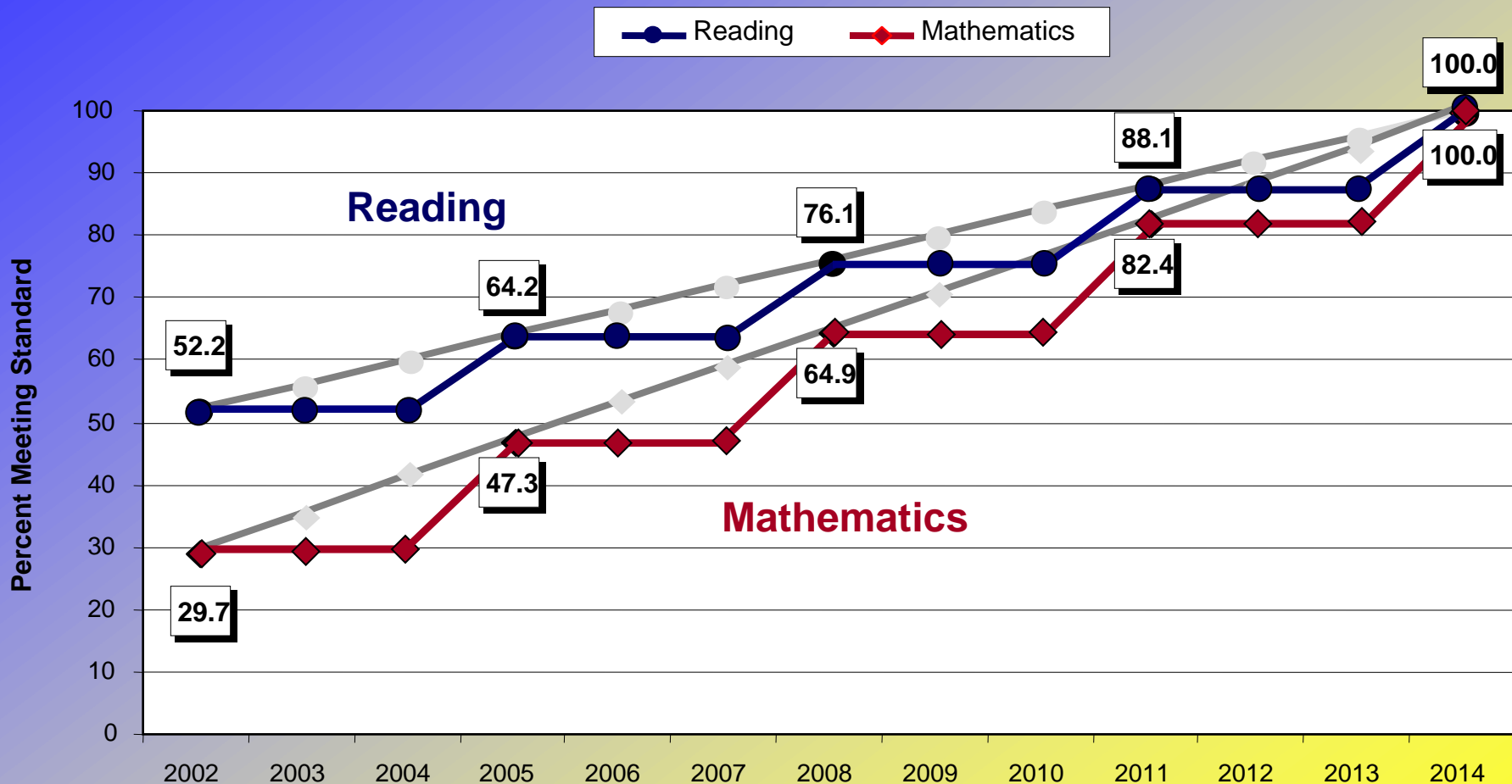
3 *Met Standard*
Proficient Performance

Non Proficient

2 *Approaching Standard*
Basic Performance

1 *Below Standard*
Below Basic Performance

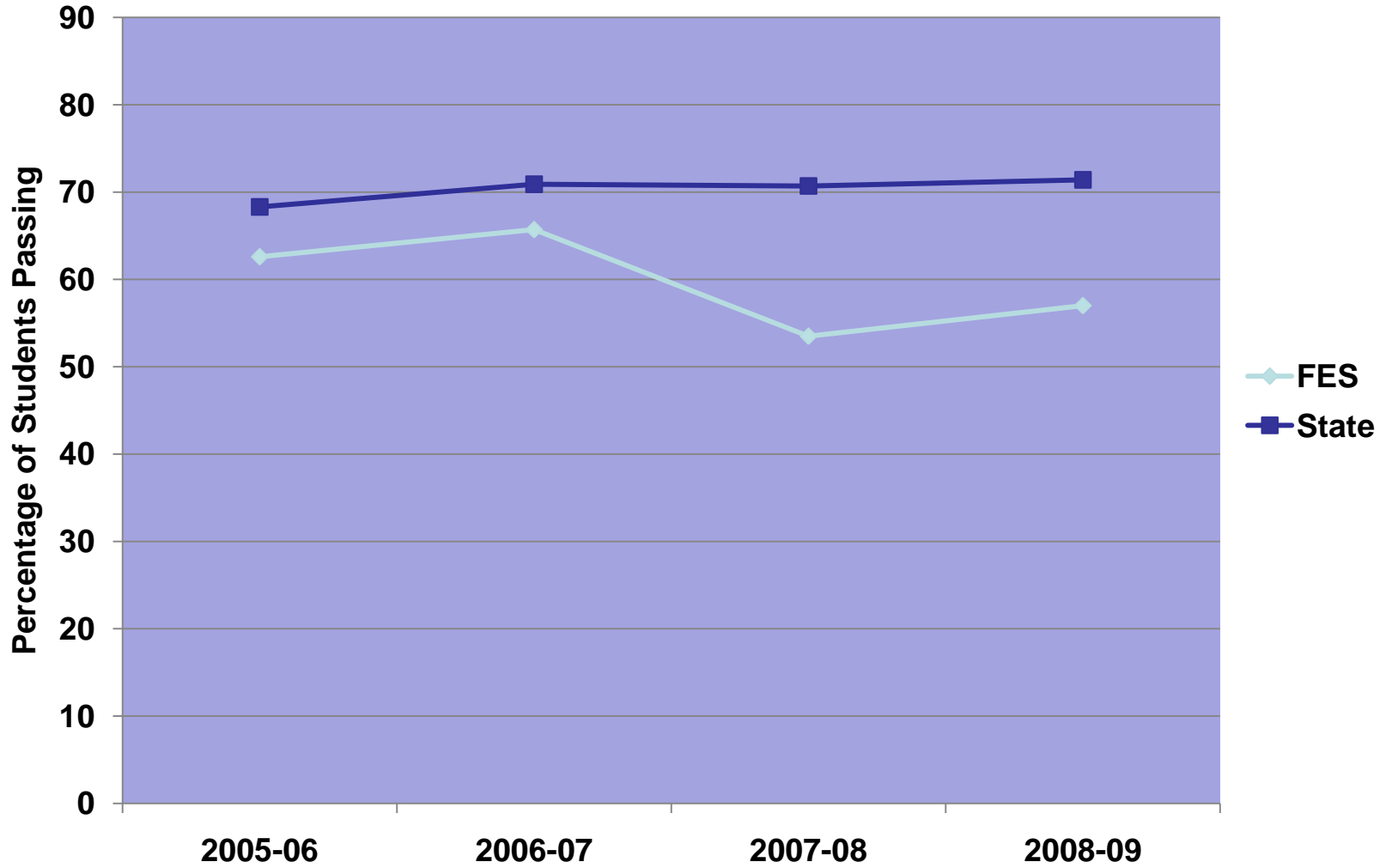
GRADE 4 YEARLY TARGETS



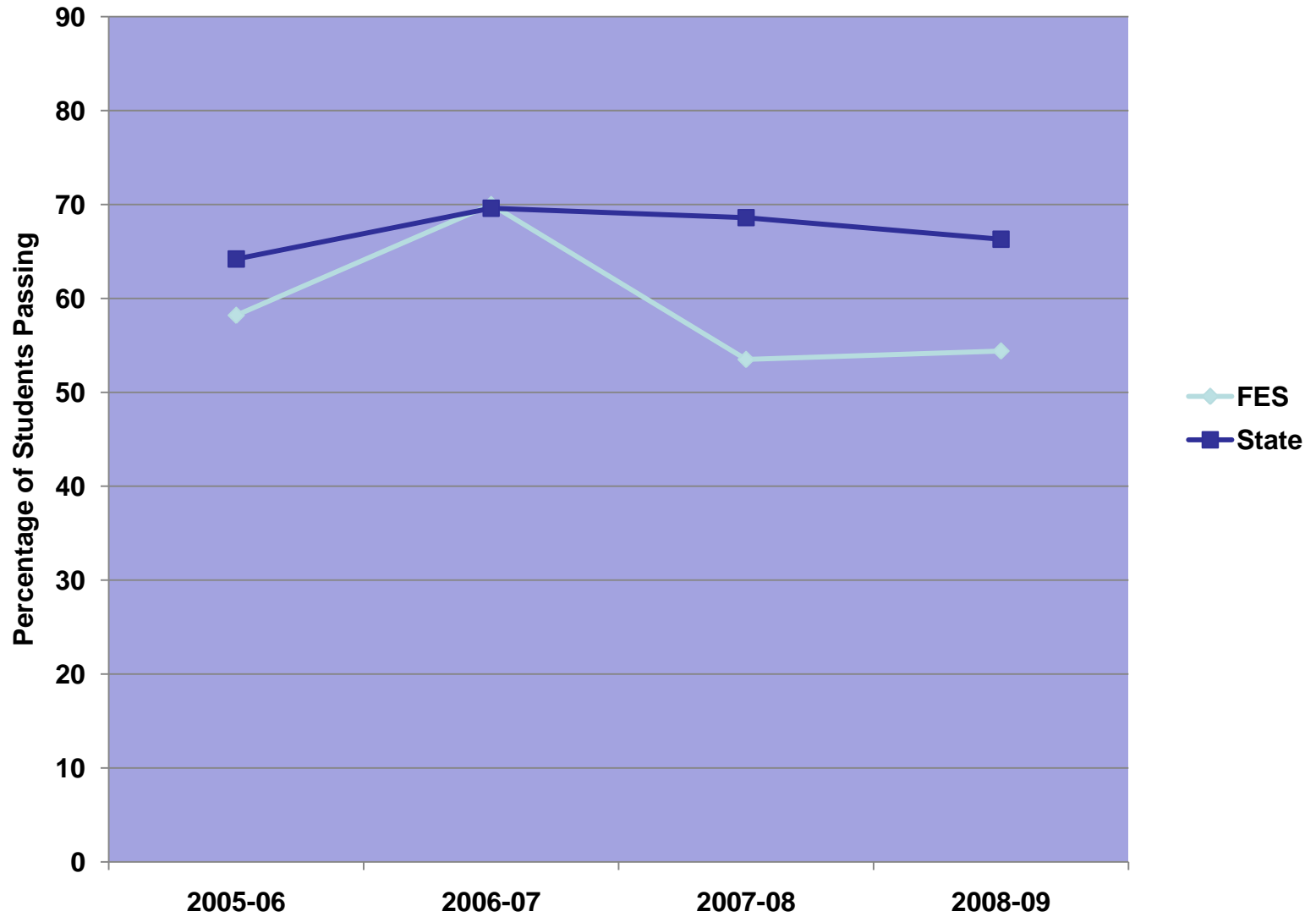
(Increments are rounded)

AYP can be made if the percent meeting standard is below the yearly target either via safe harbor or when the standard error is included in the total.

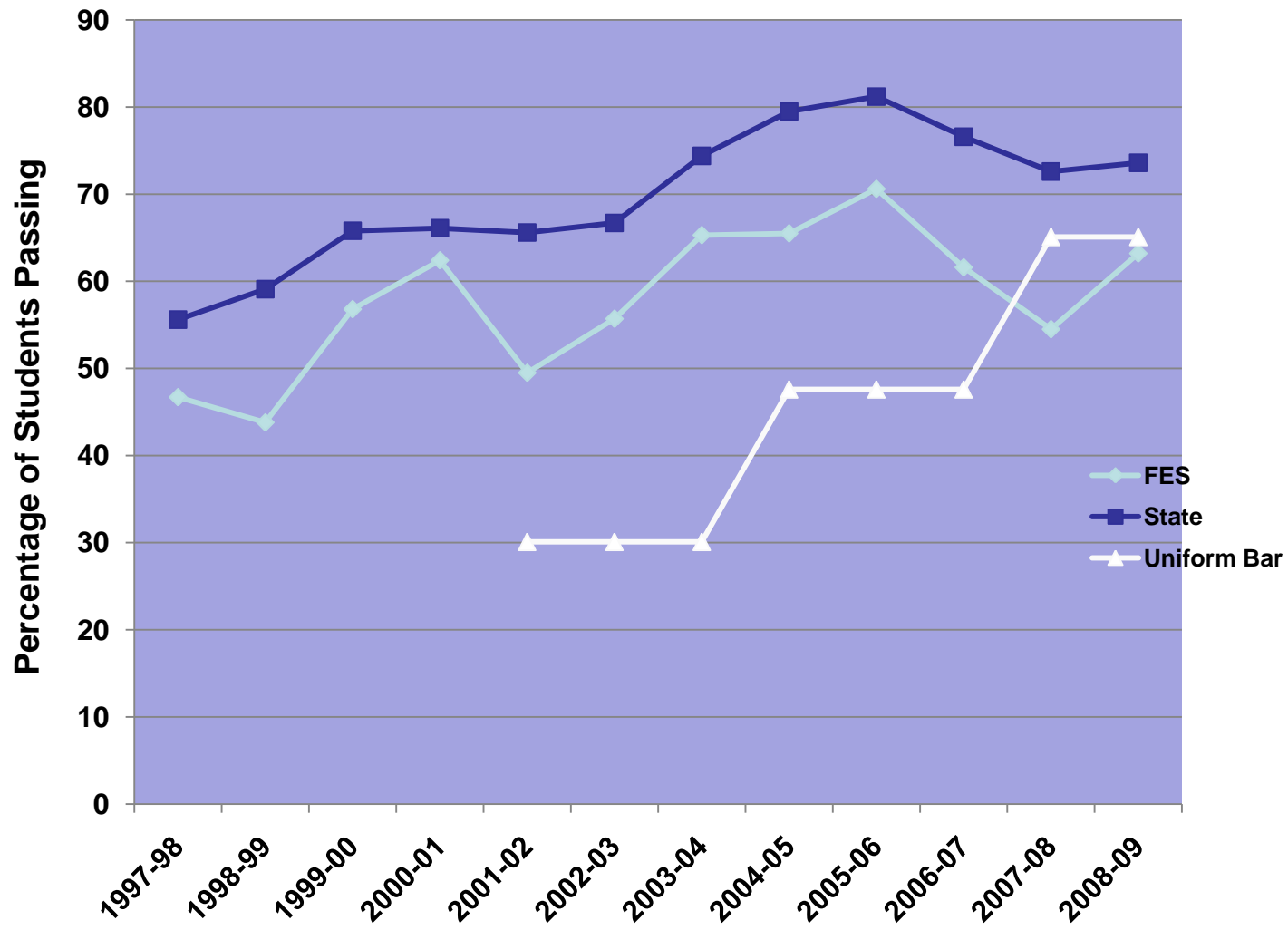
WASL Reading - FES 3rd Grade



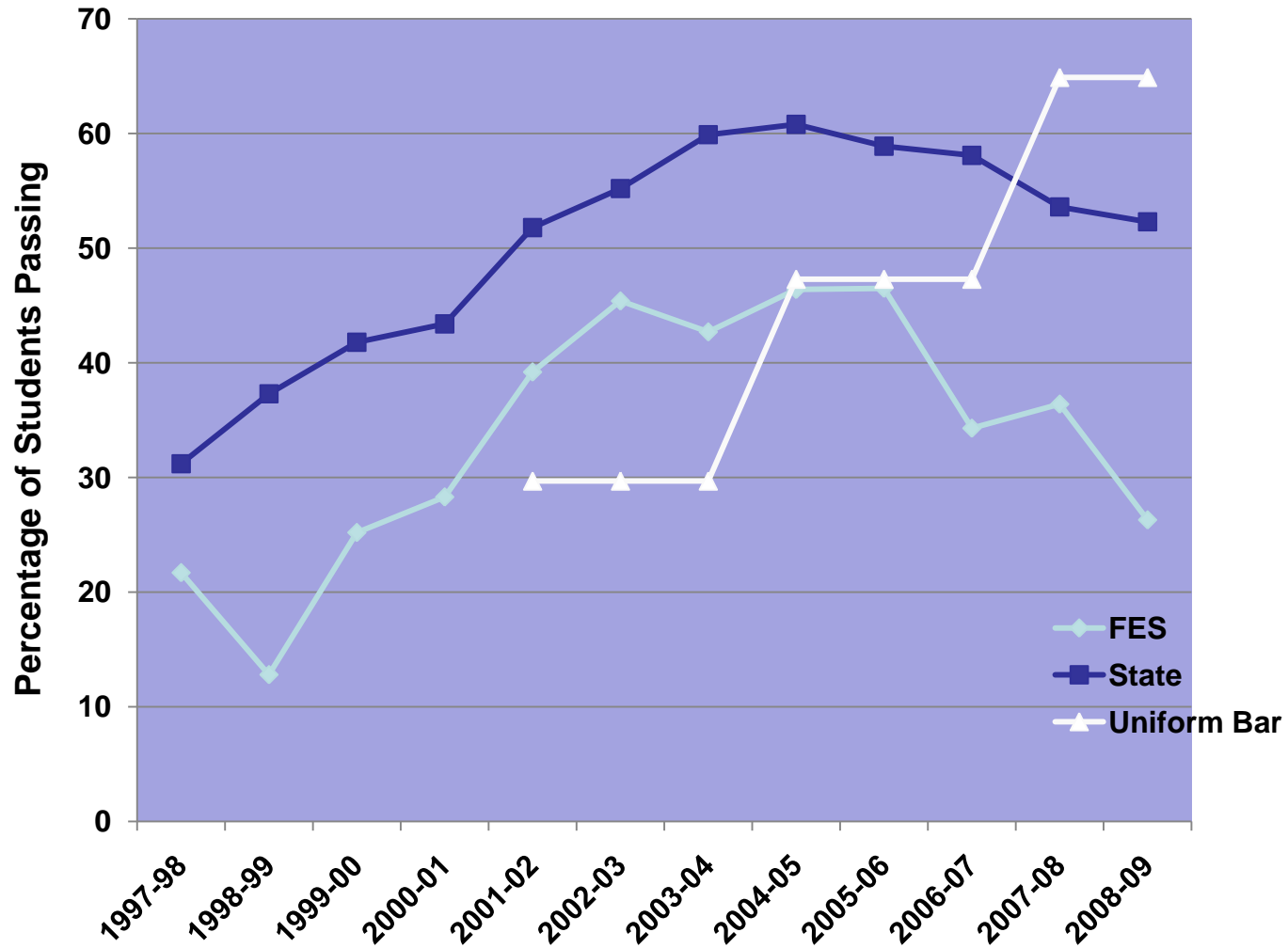
WASL Math - FES 3rd Grade



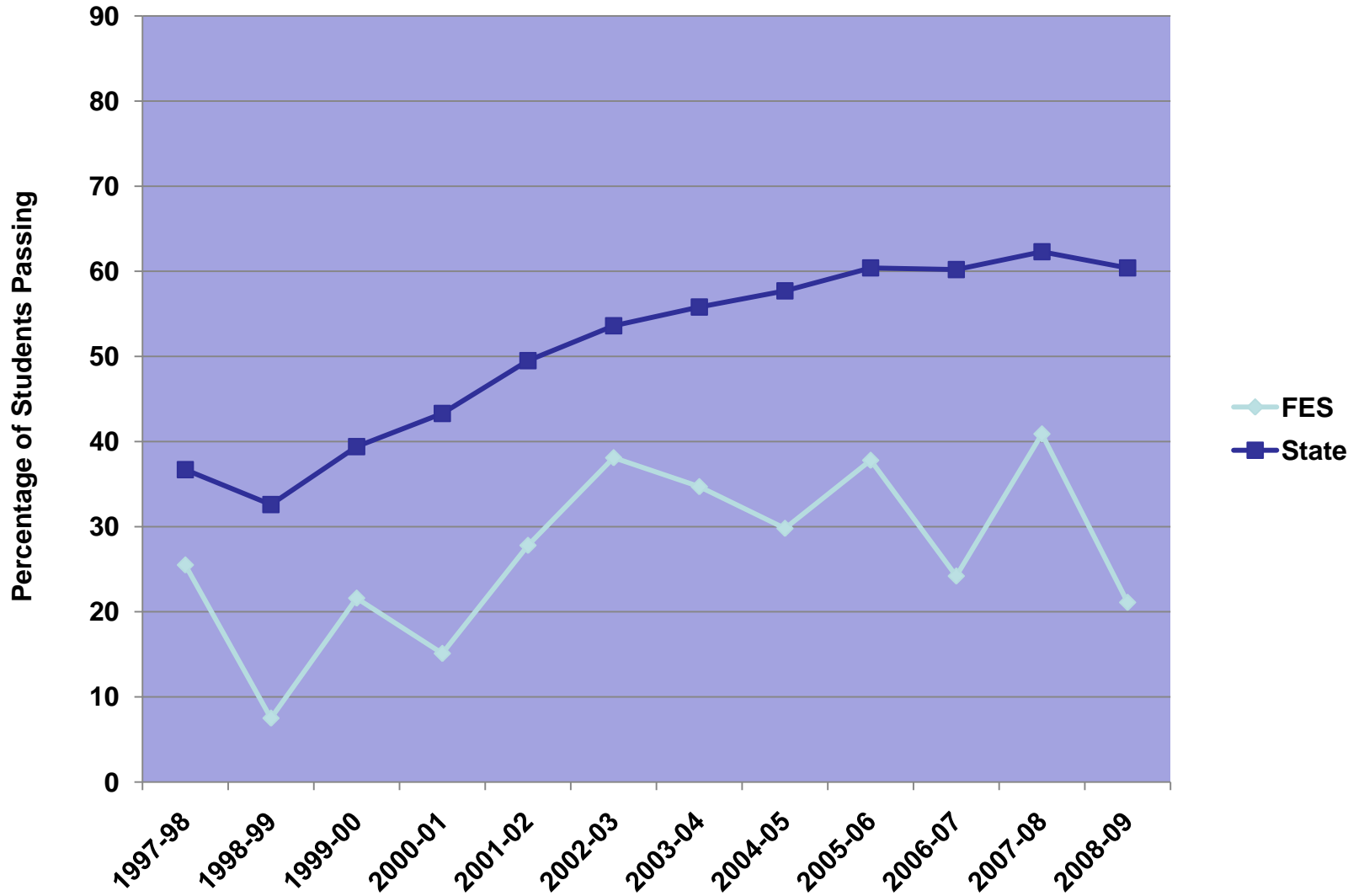
WASL Reading - FES 4th Grade



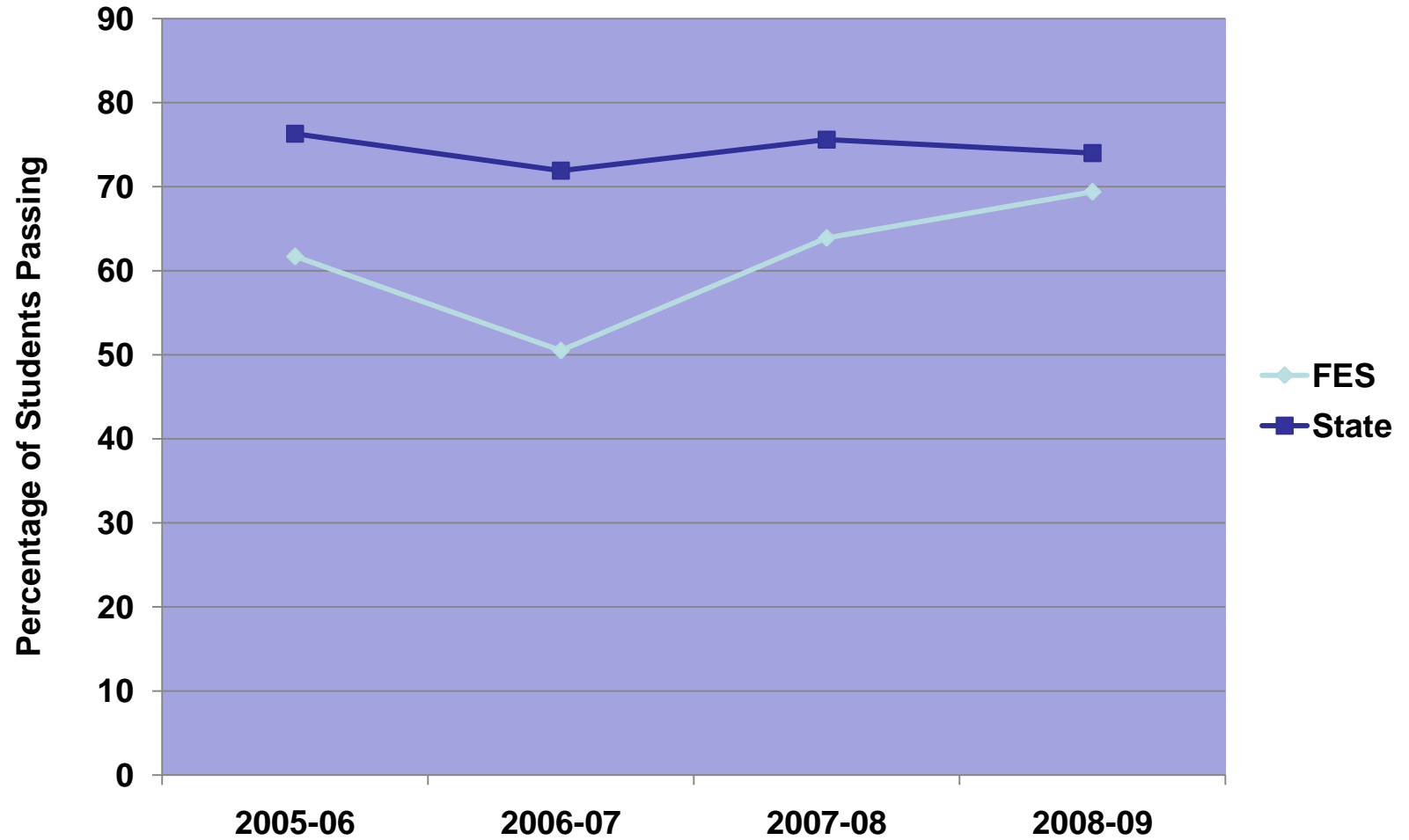
WASL Math - FES 4th Grade



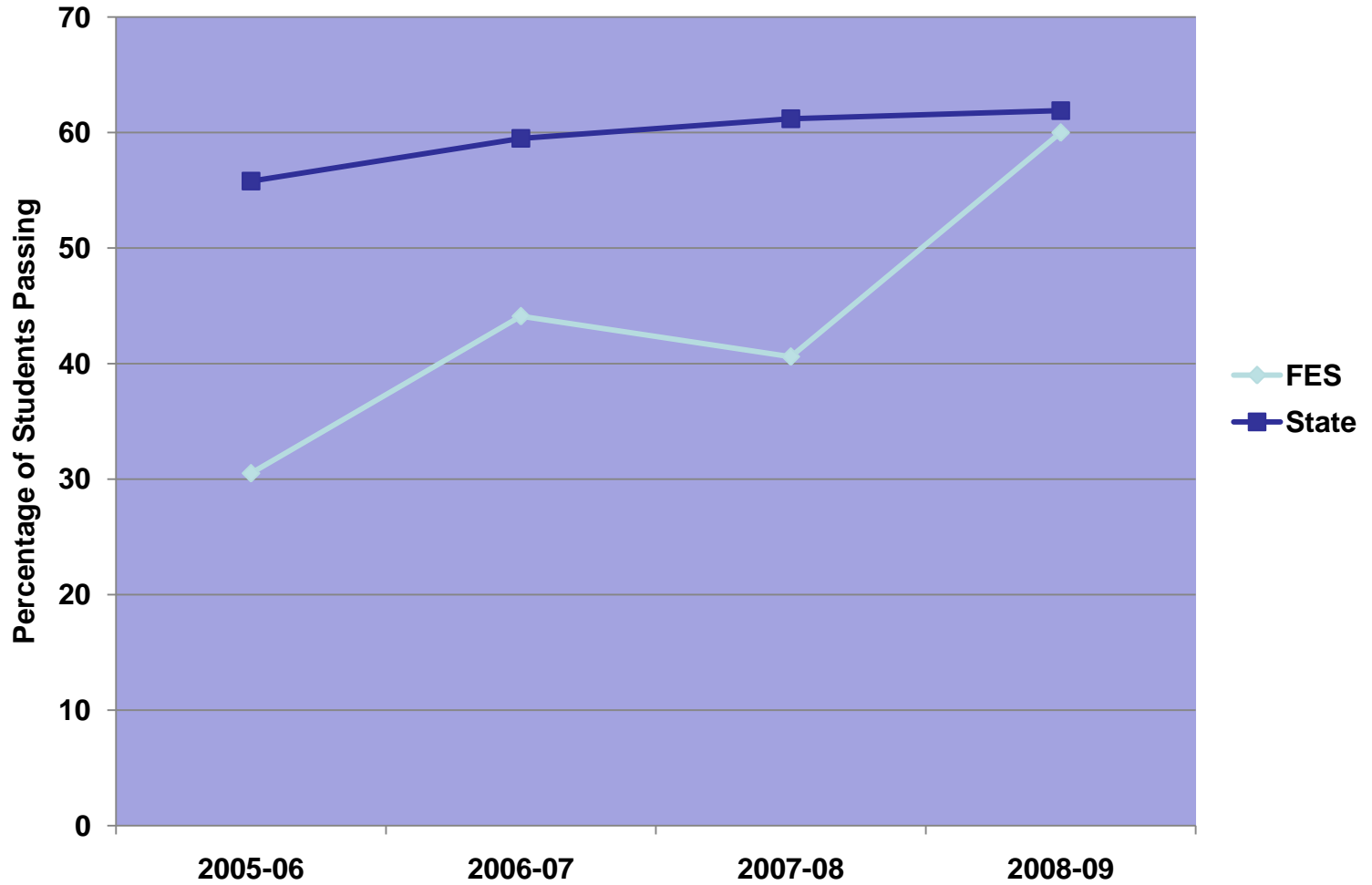
WASL Writing - FES 4th Grade



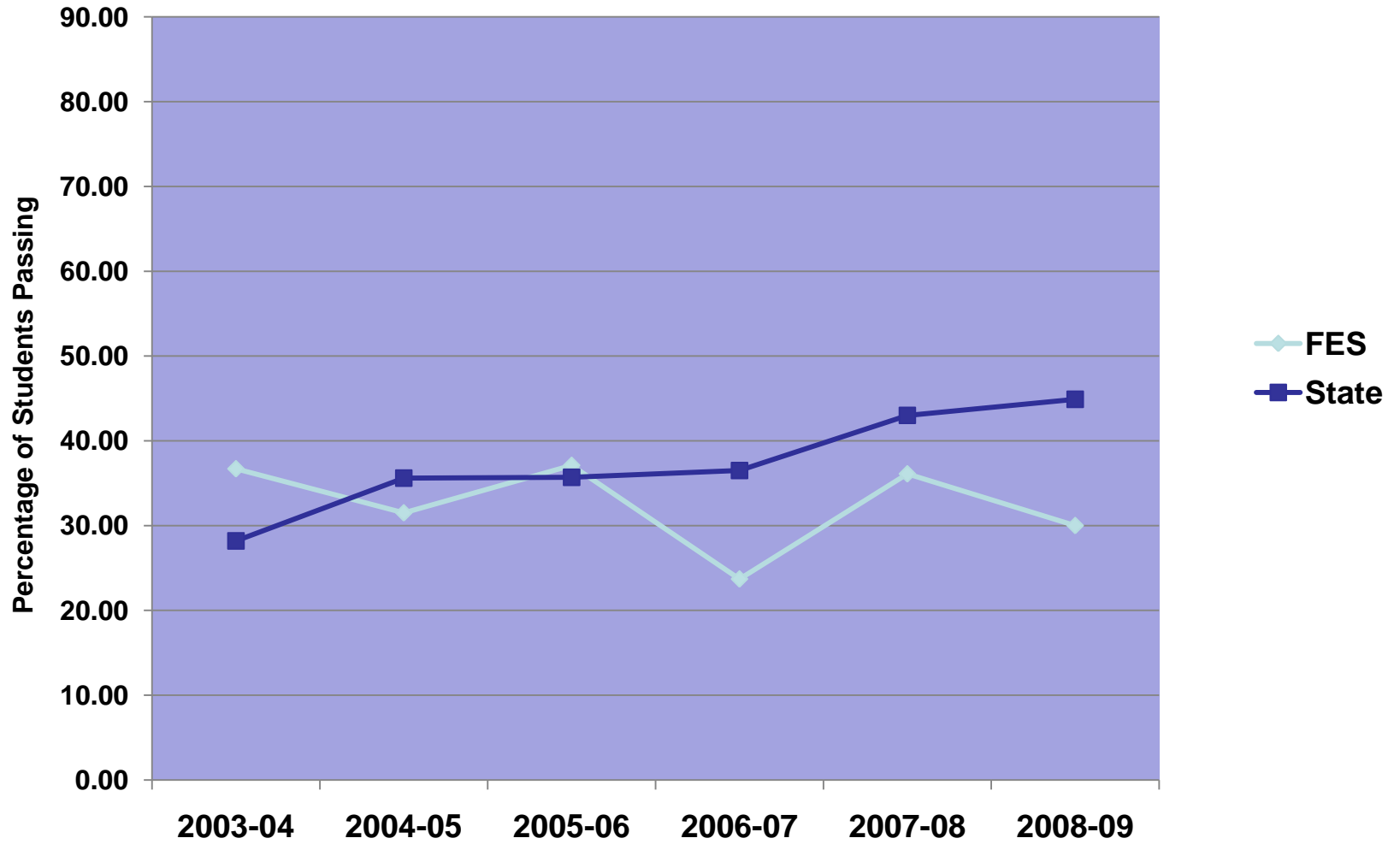
WASL Reading - FES Grade 5



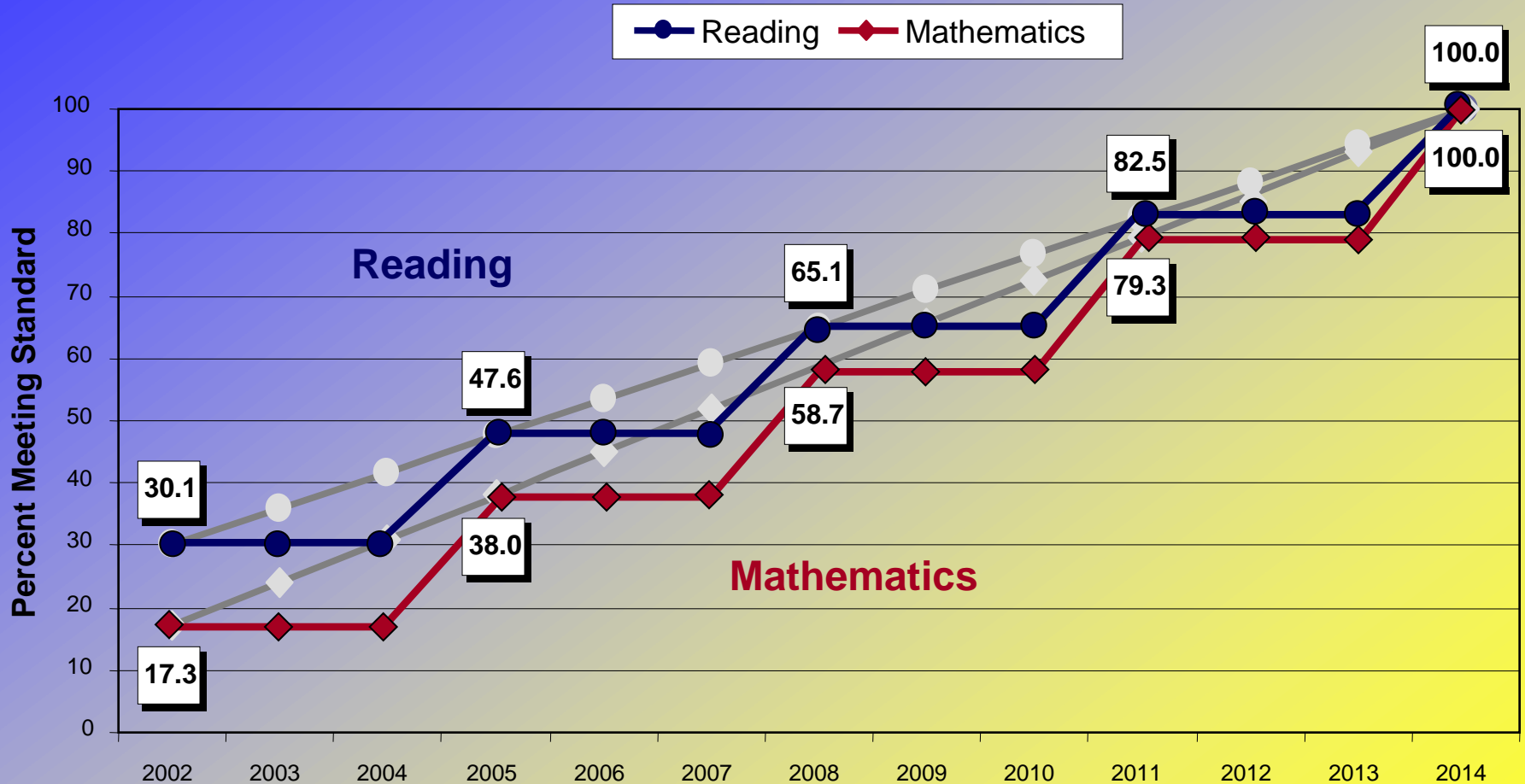
WASL Math - FES 5th Grade



WASL Science - FES 5th Grade



GRADE 7 YEARLY TARGETS



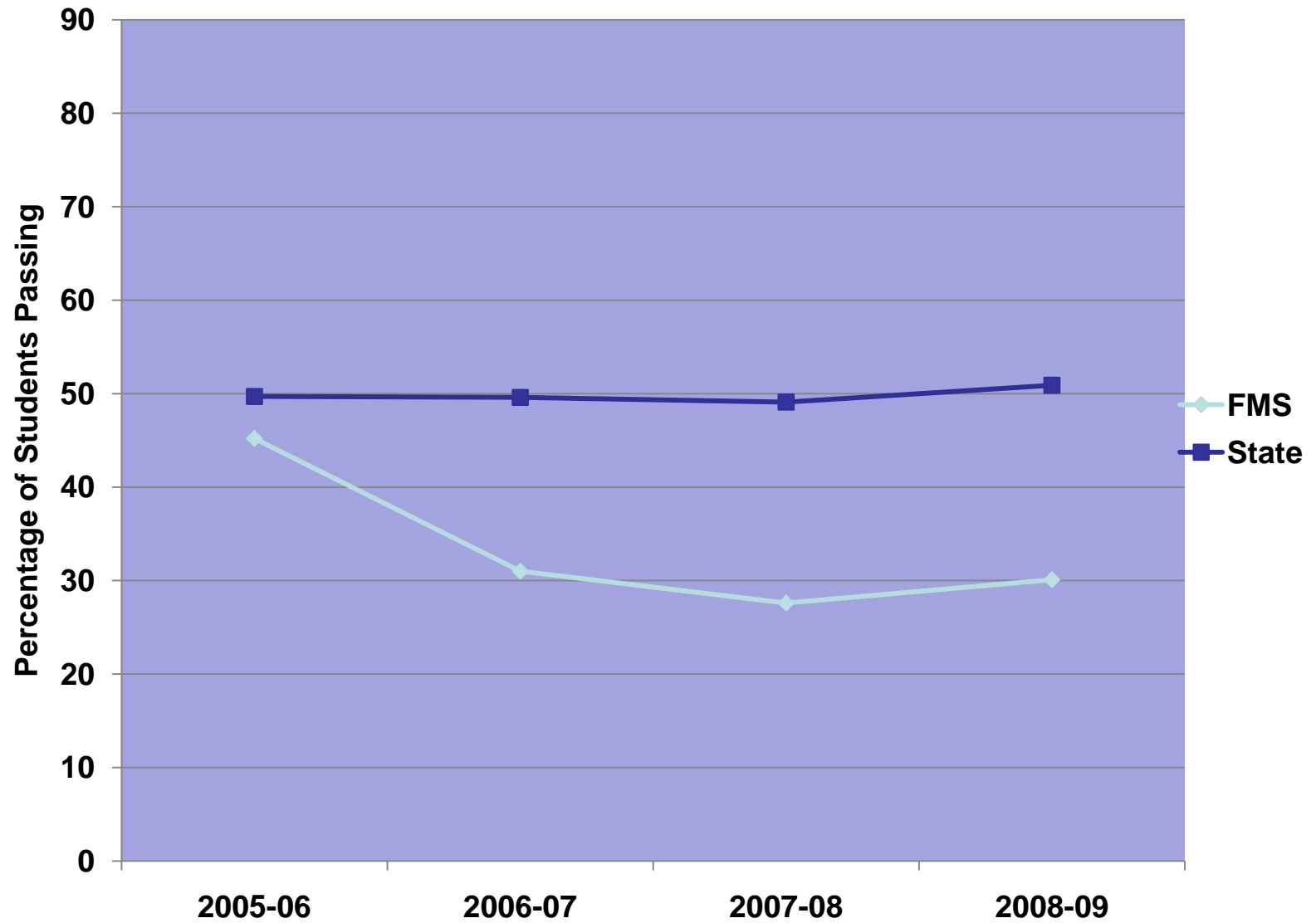
(Increments are rounded)

AYP can be made if the percent meeting standard is below the yearly target either via safe harbor or when the standard error is included in the total.

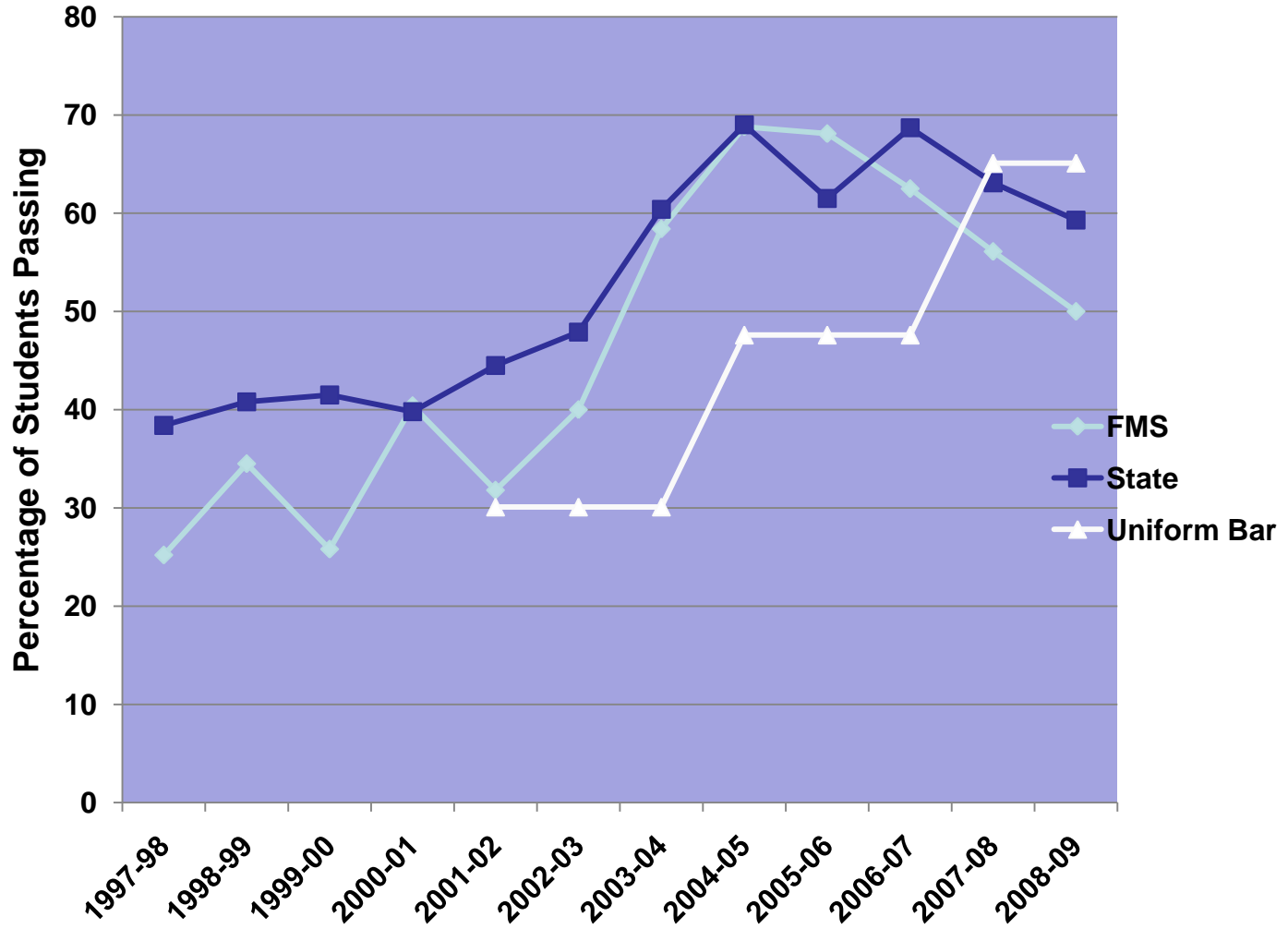
WASL Reading - FMS 6th Grade



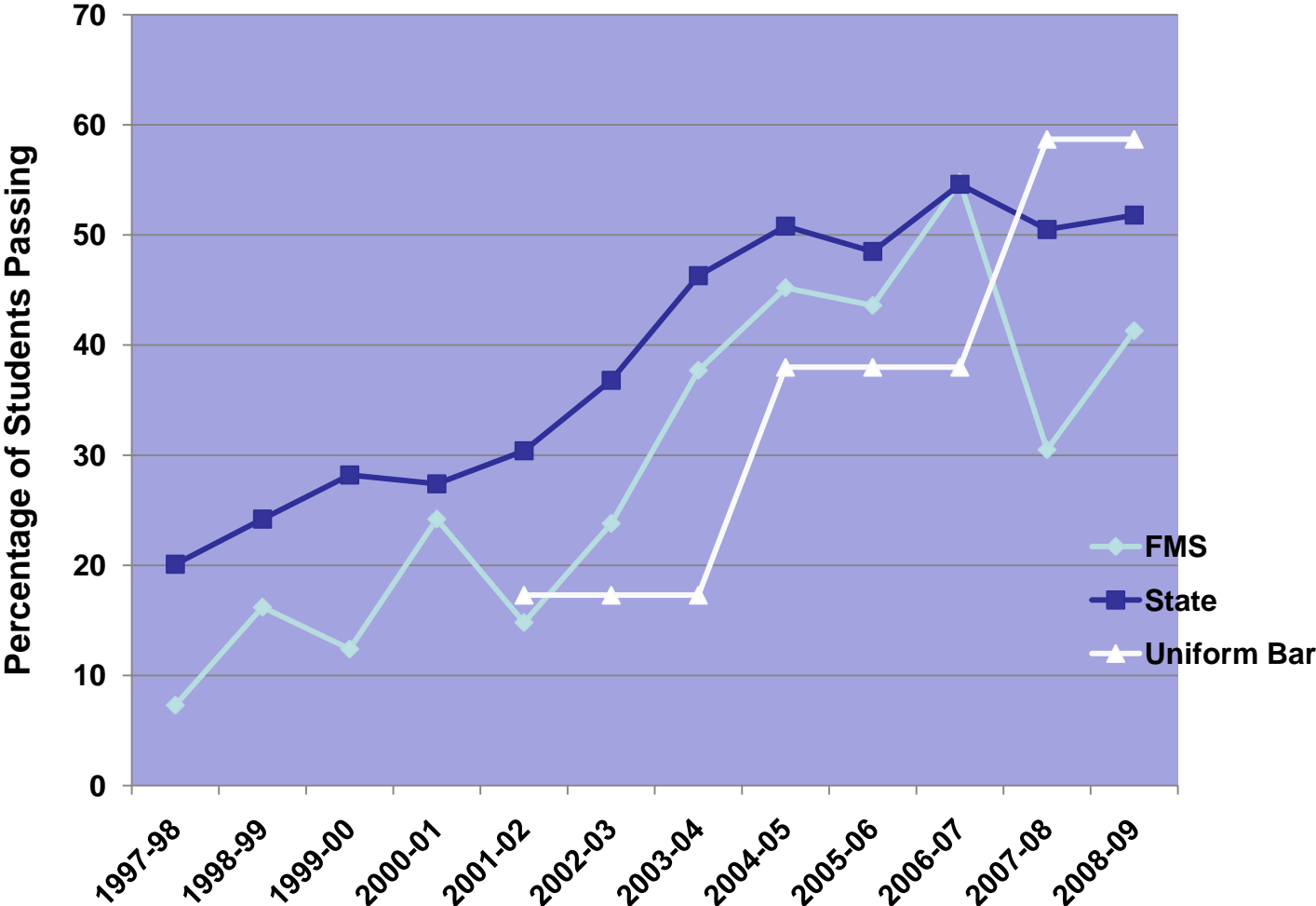
WASL Math - FMS 6th Grade



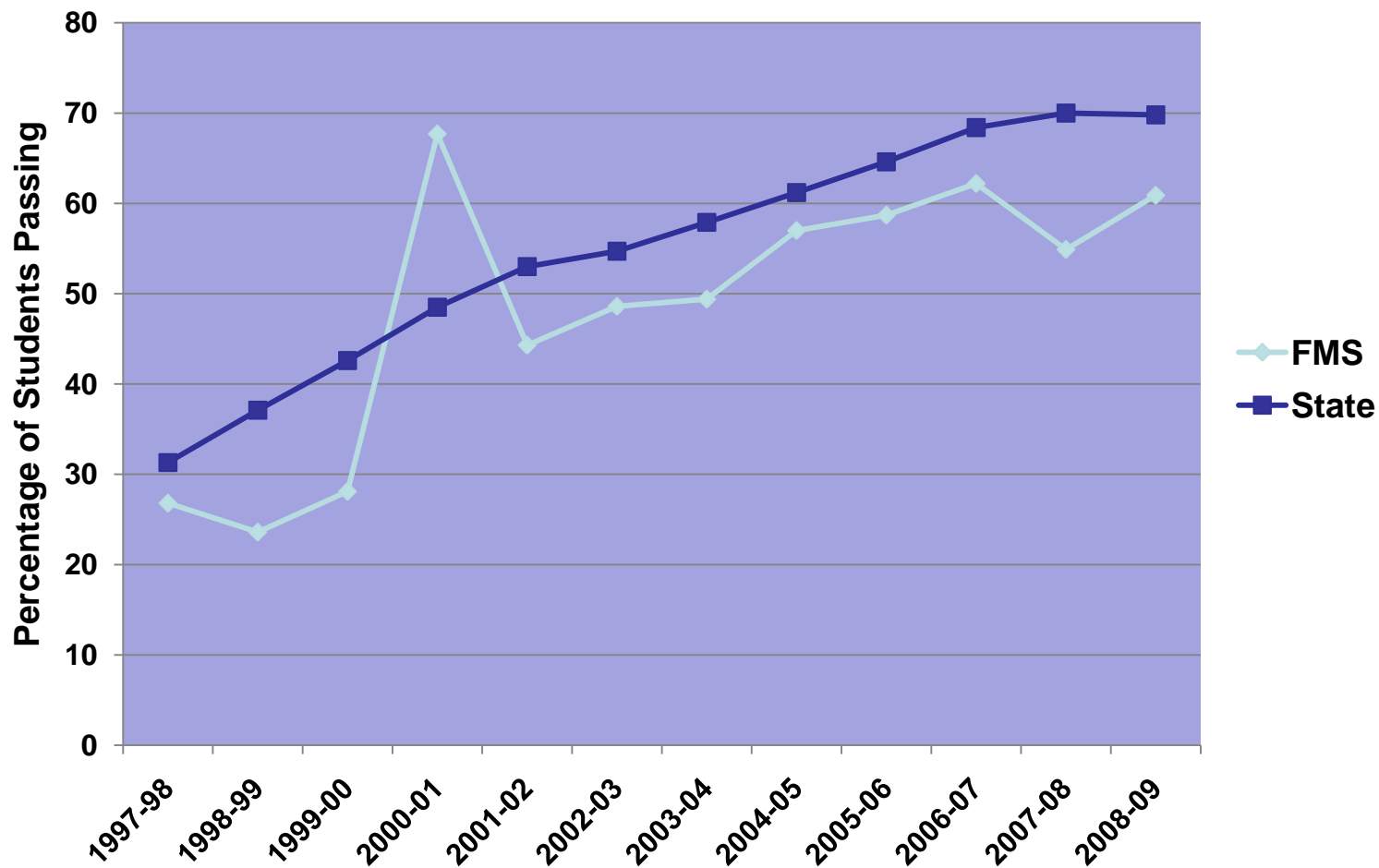
WASL Reading - FMS 7th Grade



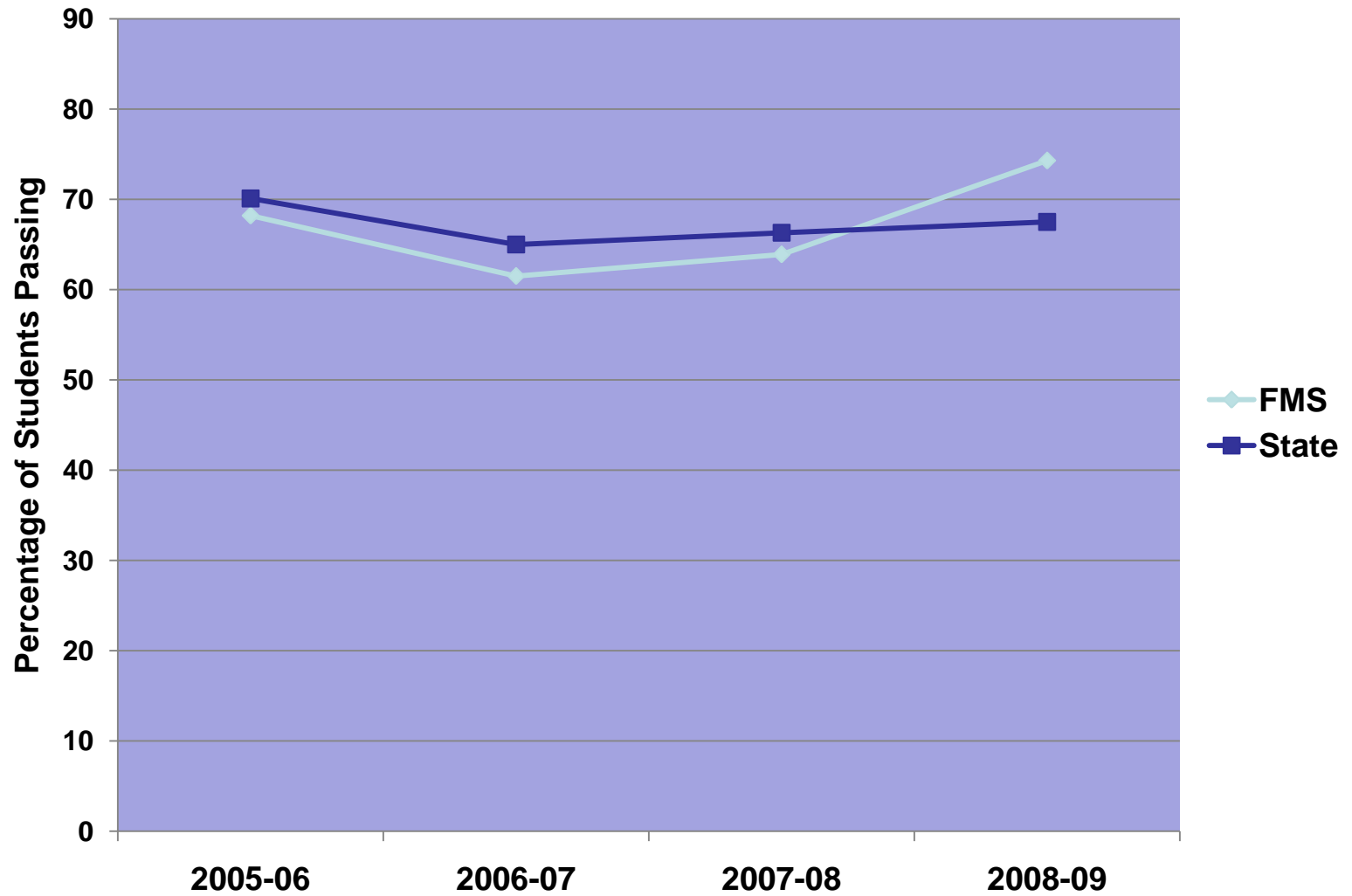
WASL Math - FMS 7th Grade



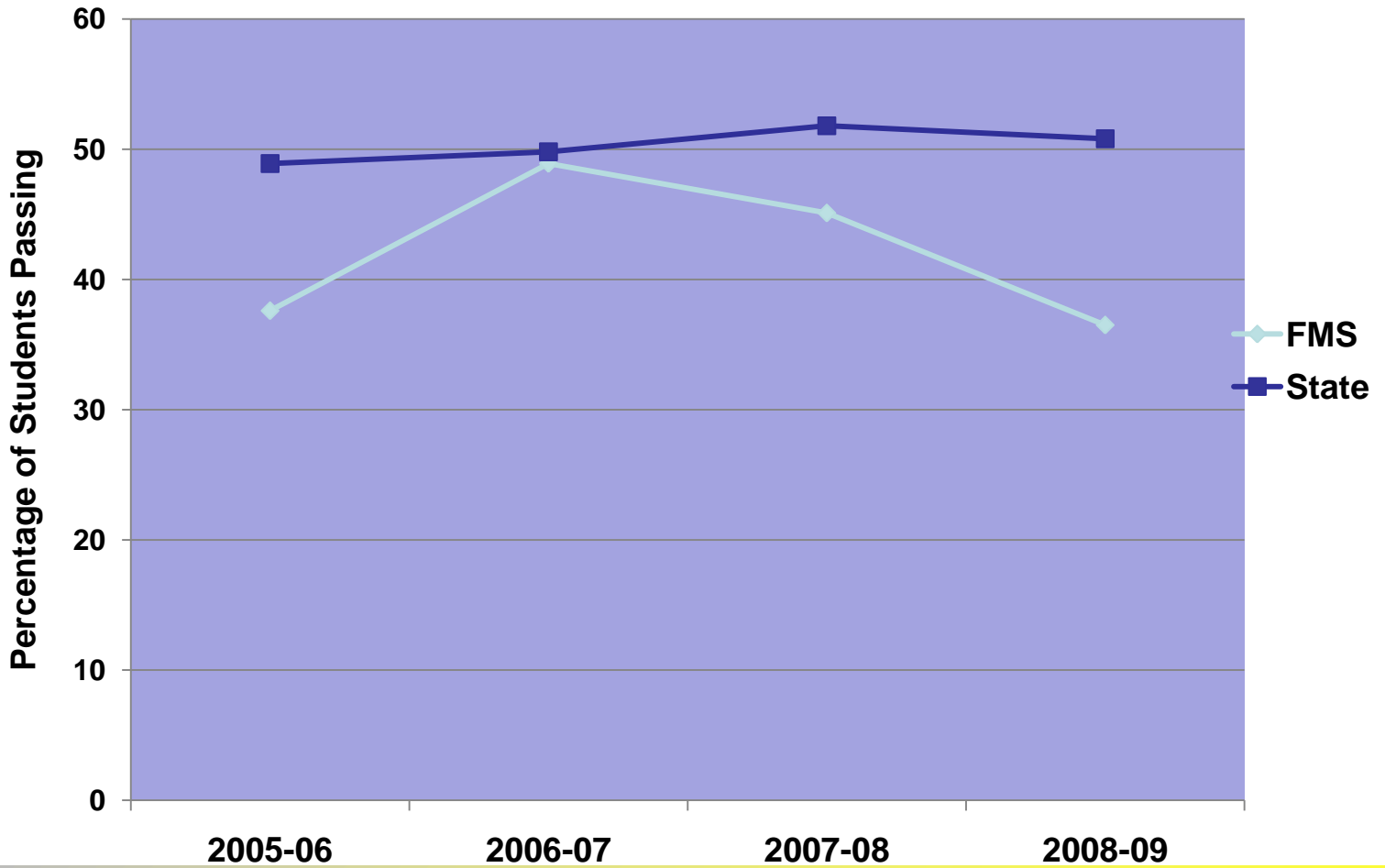
WASL Writing - FMS 7th Grade



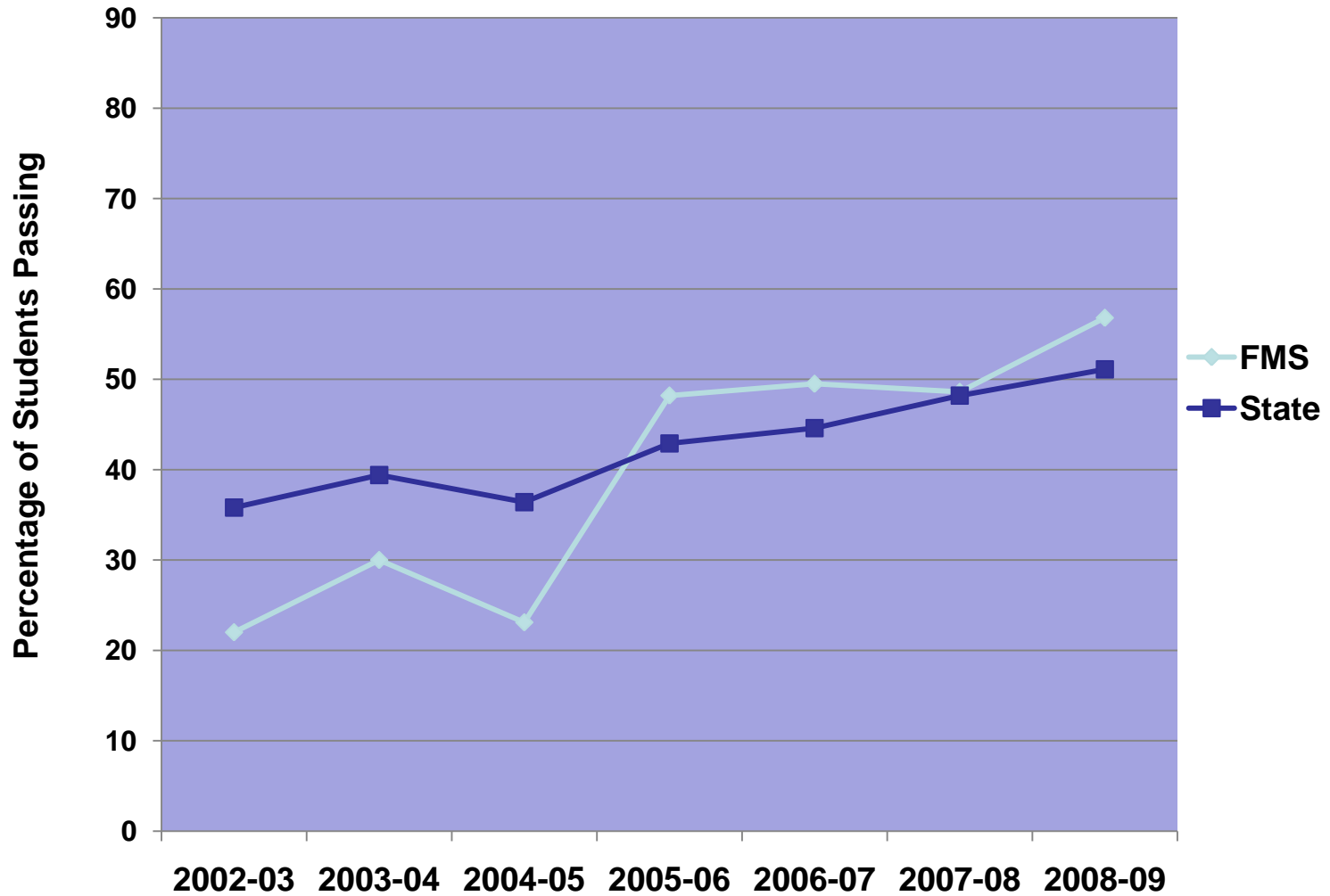
WASL Reading - FMS 8th Grade



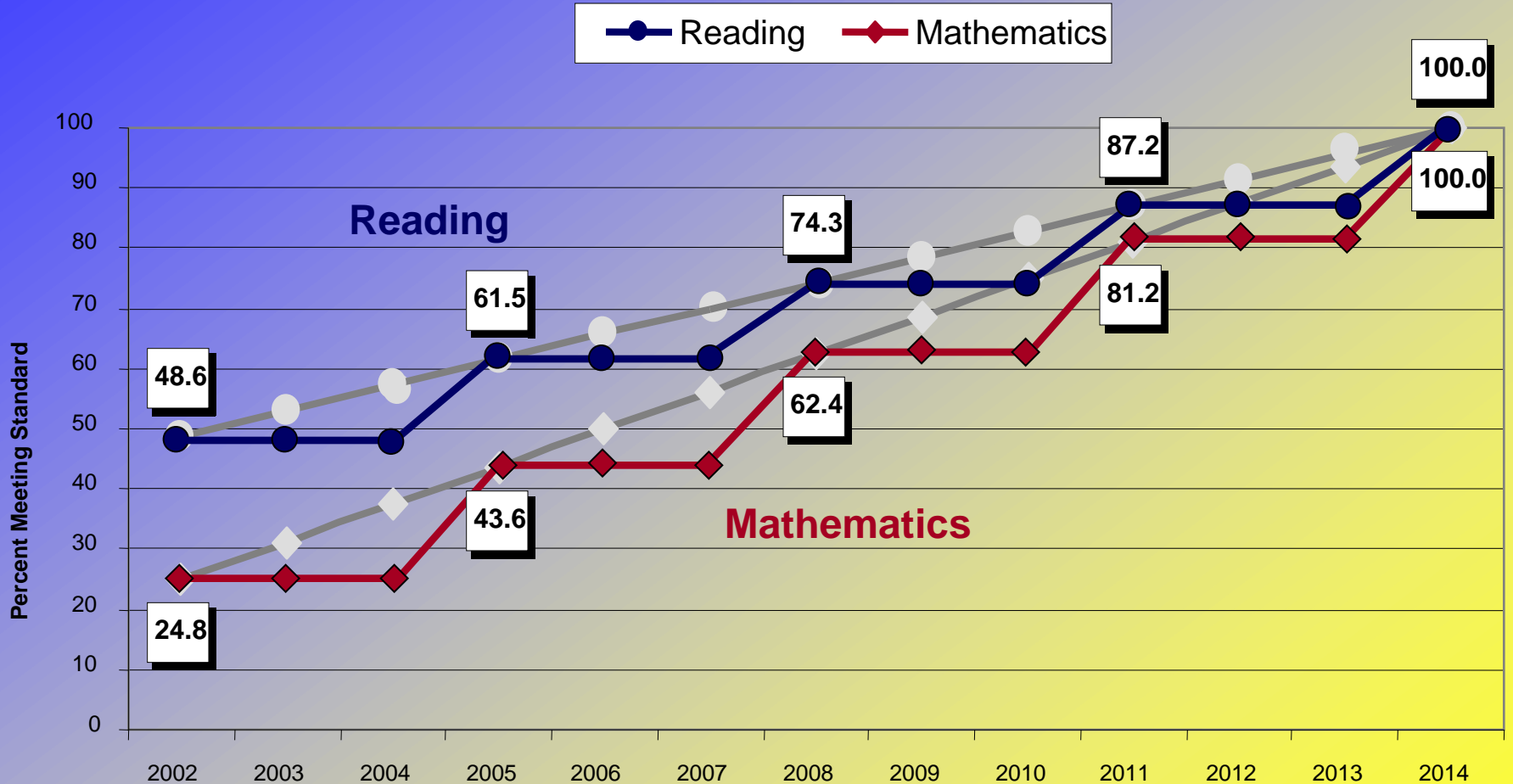
WASL Math - FMS 8th Grade



WASL Science - FMS 8th Grade



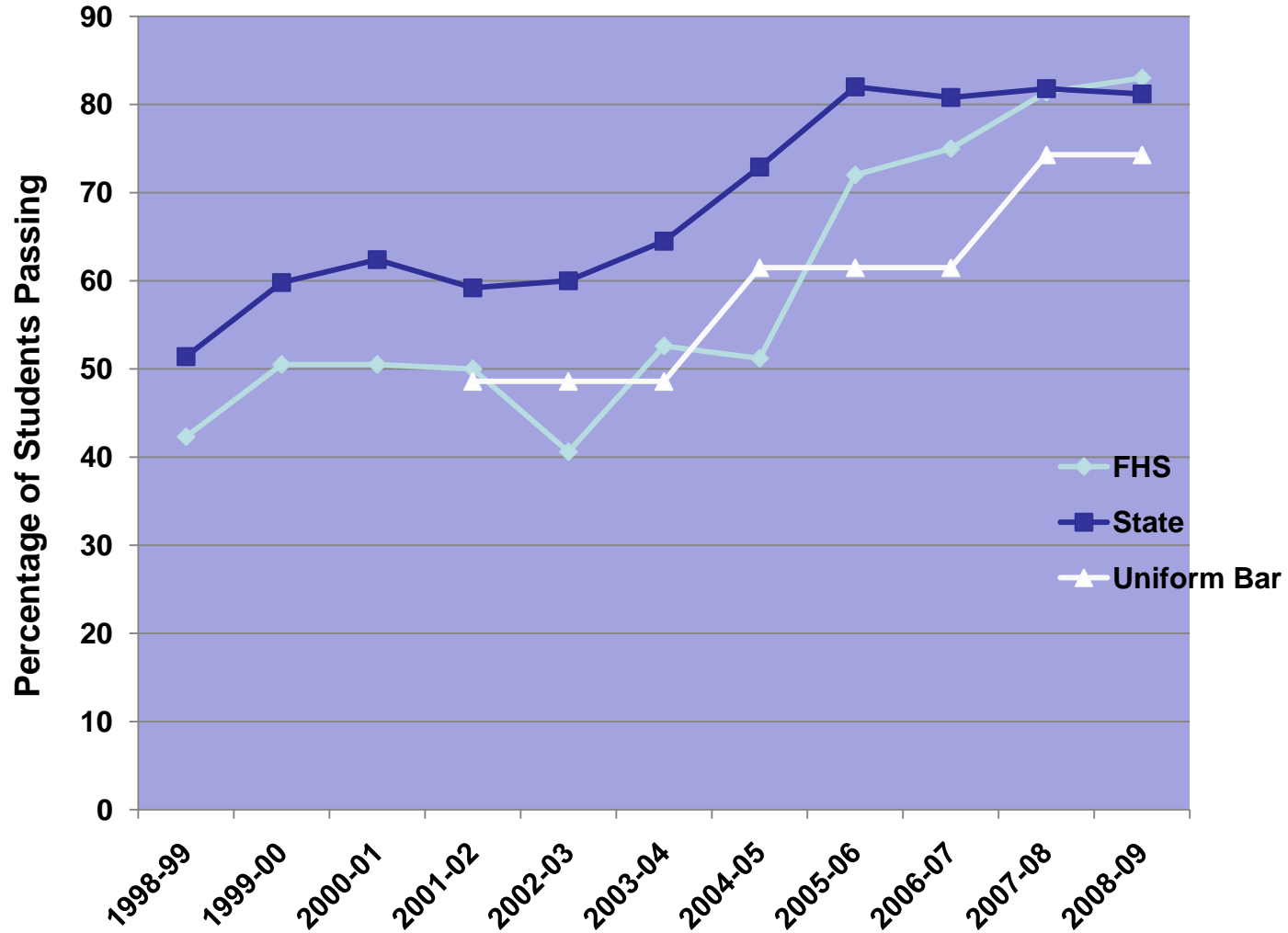
GRADE 10 YEARLY TARGETS



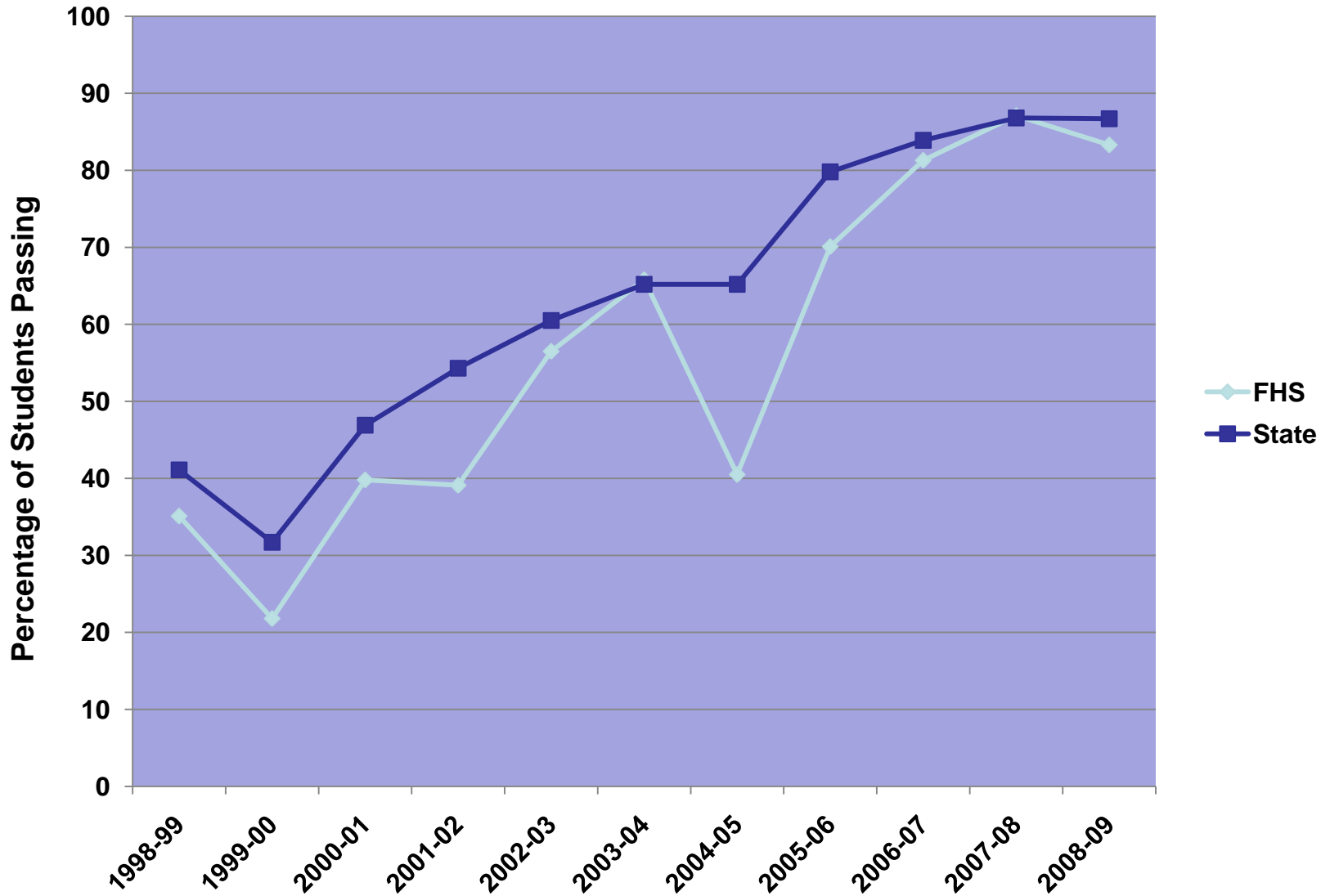
(Increments are rounded)

AYP can be made if the percent meeting standard is below the yearly target either via safe harbor or when the standard error is included in the total.

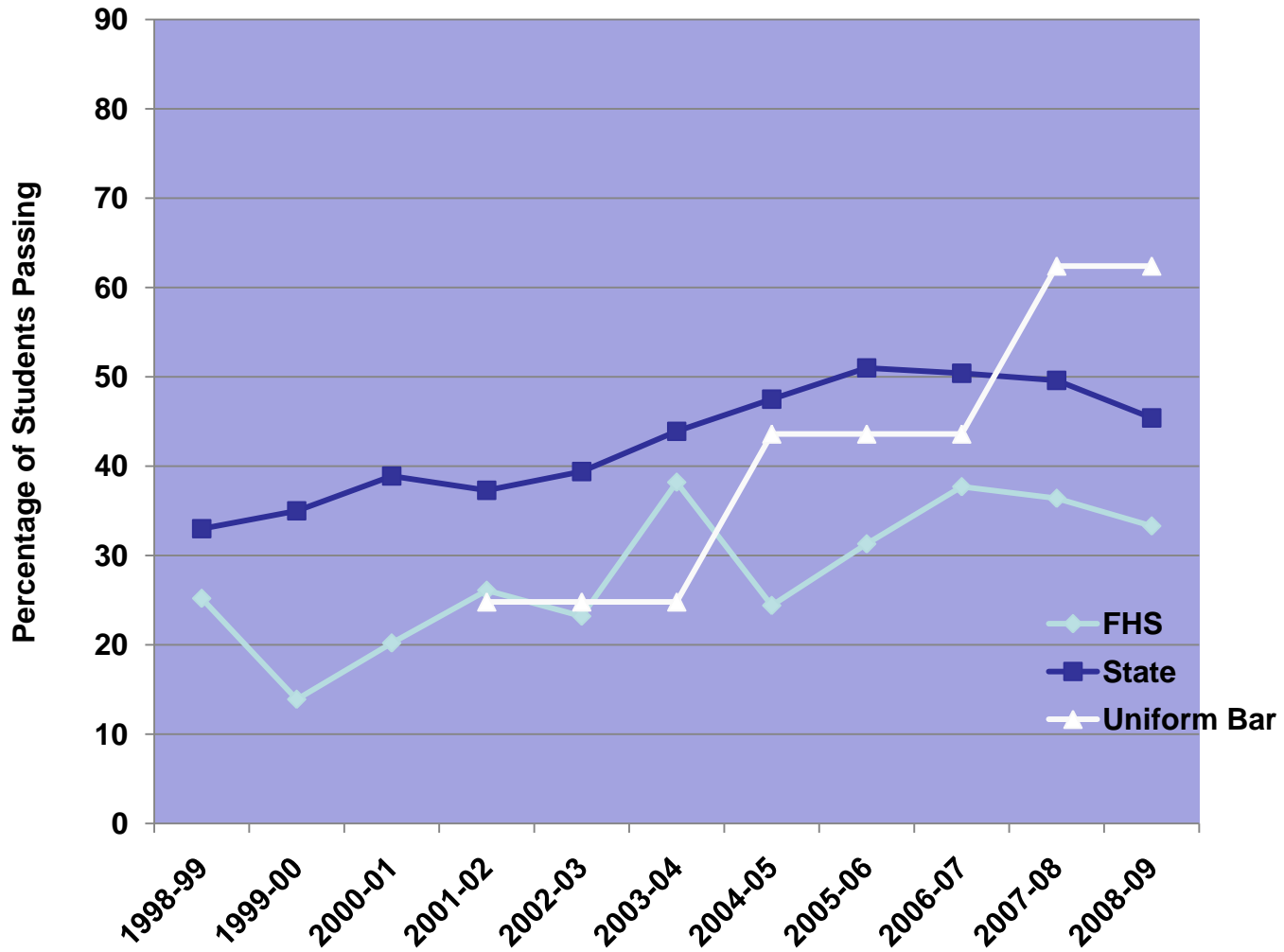
WASL Reading - FHS 10th Grade



WASL Writing - FHS 10th Grade



WASL Math - FHS 10th Grade



WASL Science - FHS 10th Grade

